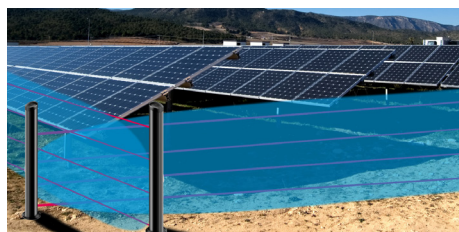
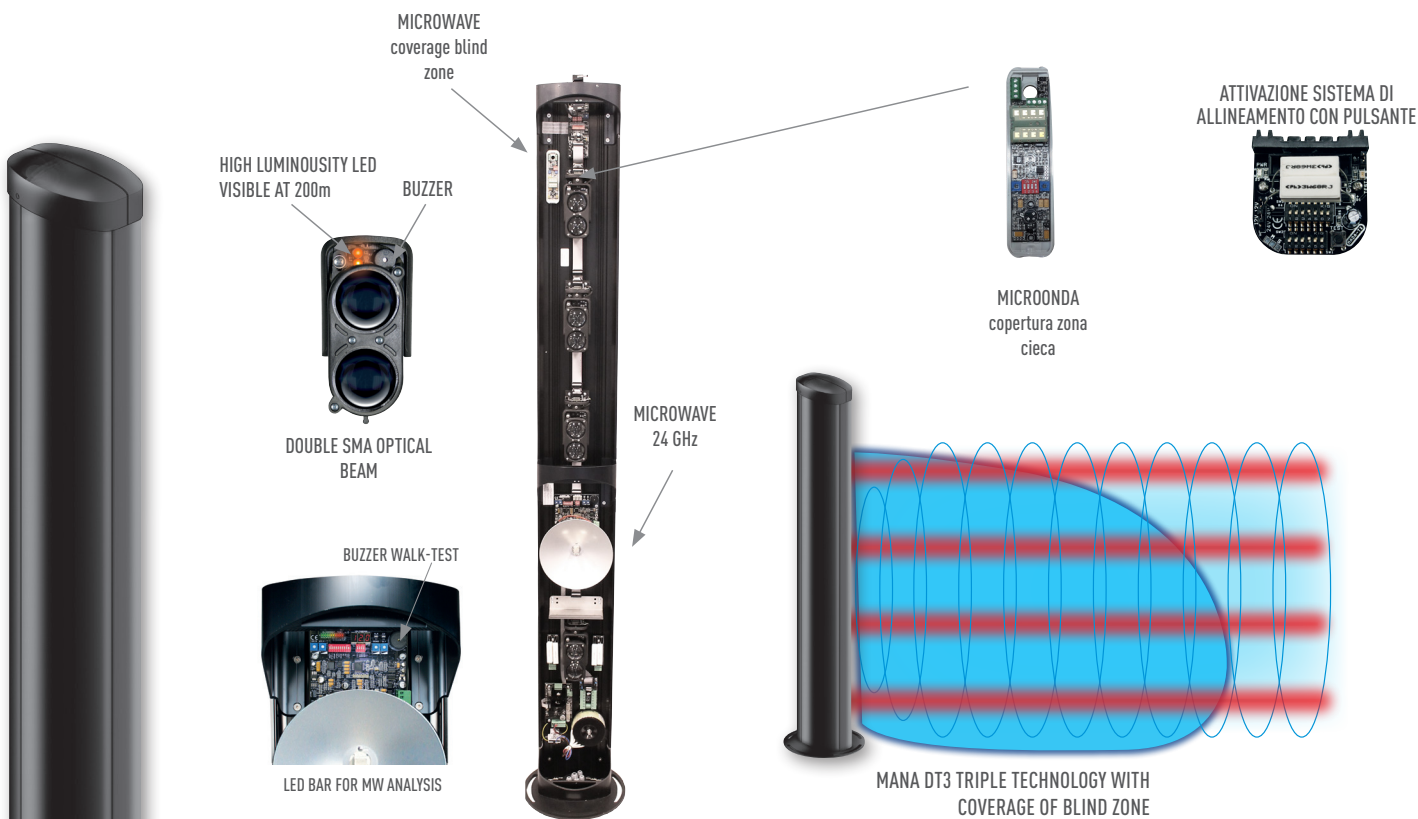


MANA DT3



Long range dual/triple IR barrier technology

Barrier designed for vast outdoor perimeter security. MANA is composed and configured based on installation and security requirements: IR only, microwave only, dual technology and triple technology where a Doppler microwave is planned that covers the blind zone of the active microwave. It is the version where a Doppler type microwave is installed inside the tower to protect the blind zone.



Technical characteristics

Maximum use distance outdoors	Adjustable from 1 to 8 m
Pointing and alignment system	Led
Microwave working frequency	24 GHz in K band
Power supply for tower	10 - 30 Vcc
Circuit absorption	40 mA
Alarm output	Relay alarm NC
MW opening	80 ° vertical - 30 ° horizontal
Function	Digital signal processing on MW
Level of protection	IP65
Profile dimensions LxDxH	40 mm x 33 mm x 135 mm